



CONGRESSMAN JEB HENSARLING'S GUIDE TO VISITING WASHINGTON D.C.





As your Representative in Congress, I am pleased to provide you with this comprehensive guide to Washington D.C. It includes information about many attractions around the city to help you plan your visit. There are several tours my office can help arrange for you, but available space on many tours is limited, particularly during the summer months. Make sure to plan in advance and contact my office as soon as possible if we can assist you in any way. I hope that you have an enjoyable and enriching experience in Washington, D.C.

Yours respectfully,

A handwritten signature in black ink that reads "Jeb Hensarling".

About the Congressman

Congressman Jeb Hensarling is a life-long conservative dedicated to advancing the principles of faith, family, free enterprise, and freedom. An outspoken advocate for limited government and unlimited opportunity, Jeb has fought to control spending, keep taxes low, defend families, strengthen our homeland security, and support our troops.

As a testament to his leadership during our nation's economic crisis, Jeb was appointed during the 111th Congress to serve as Vice Ranking Member for the House Committee on Budget and as the top Republican on the House Financial Services Subcommittee on Financial Institutions and Consumer Credit. As one of the most active Republican members on the House Financial Services Committee, Jeb has been a consistent and outspoken proponent of consumer choice, competitive markets and smart regulation in our financial markets. Jeb served on the Congressional Oversight Panel for the \$700 billion TARP program until December 2009.

As a result of his ongoing efforts to fight wasteful spending and promote economic growth, Jeb has served on several prominent committees including the Select Committee on Earmark Reform, a ten-member panel created by House Republicans to reform the earmark process and the House Republican Economic Stimulus Working Group, a 13-member team formed in response to President Barack Obama's request for Republican input on legislation designed to stimulate the economy. Jeb also serves on as a Deputy Republican Whip, a select group of Republican leaders working to employ and communicate common-sense solutions to issues facing our nation.

During his tenure on the Budget Committee, Jeb has led the charge in Congress for balancing the budget and restraining the growth of government spending. In order to achieve this goal, he introduced the "Family Budget Protection Act," a landmark budget reform bill that was heralded as the "Gold Standard" of budget enforcement legislation by a coalition of conservative groups, including the Americans for Tax Reform, Citizens Against Government Waste, Citizens for a Sound Economy and the National Taxpayers Union. For the past six years, the National Taxpayer's Union declared Jeb's spending agenda as one of the top two least expensive in Congress.

When Jeb served as Chairman of the Republican Study Committee from 2007-2008, he introduced the Taxpayer Bill of Rights to lay the foundation for a more efficient, common sense budget and tax system in Washington. He also co-authored the Taxpayer Choice Act, a comprehensive, individual income tax reform initiative with two principal aims: eliminate massive future tax increases by repealing the Alternative Minimum Tax, and provide individuals with a modern alternative tax system that is transparent, simple, and efficient. He also co-authored the American Energy Act, an all-of-the above energy policy for America in the 21st century.

In order to provide real economic stimulus, Jeb co-authored the Economic Growth Act of 2008 to provide broad, growth-oriented, permanent incentives for economic activity across all sectors and industries. And,

when Congress considered the \$700 billion bail out for banks on Wall Street that held troubled mortgage-related assets, Jeb spearheaded efforts to find a taxpayer-friendly alternative to then-Treasury Secretary Henry Paulson's plan.

He has become a national voice for conservative values and principles. The Dallas Morning News said that Jeb has emerged as a "rising congressional star" and is a "man of conviction." The New York Times said that Jeb has become known as a "conservative leader" and the National Review called Hensarling "Rep. Budget Reform."

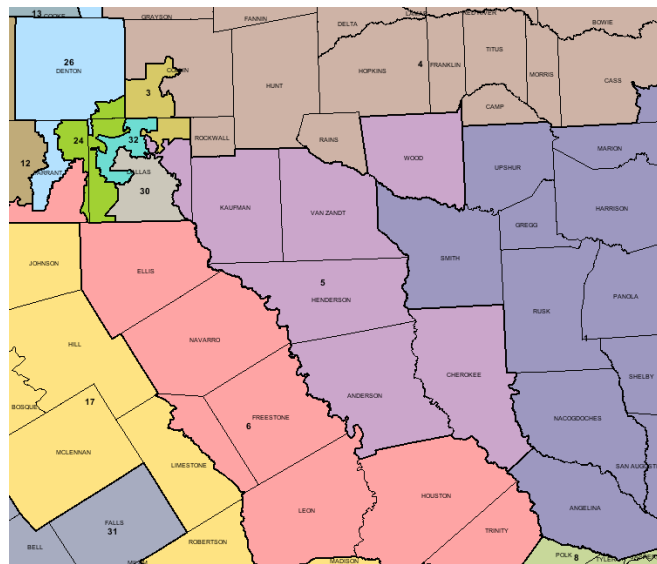
He has received numerous honors and awards for his outstanding service in Congress, including the "Spirit of Enterprise Award," the "Small Business Advocate Award," the "Friend of the Taxpayer Award," the "Hero of the Taxpayer," and the "Fighter for Free Enterprise Award," for his tireless efforts on behalf of Texas taxpayers and small businesses. According to the National Taxpayer Union, Hensarling scored the highest pro-taxpayer rating in the Texas delegation and the second highest in the entire U.S. House of Representatives.

Jeb was born in Stephenville, Texas, and grew up working on his father's farm near College Station. Jeb was an active student leader at Texas A&M University, where he earned his Bachelor's degree in economics in 1979. Later, he went on to earn a law degree from the University of Texas in 1982.

After serving on Senator Phil Gramm's staff for several years, Jeb spent ten years in the private sector, serving as an officer for a successful investment firm, a data management company, and an electricity retail company. His experience in helping to create jobs and having to meet a regular payroll have made him an ally of small business, and a strong advocate for economic growth.

Dating back to his early years as an Eagle Scout, Congressman Hensarling has remained actively involved in his community. He has been a leader with the American Cancer Society of Dallas and a board member for the Children's Education Fund. Jeb and his wife Melissa are members of St. Michael and All Angels Church and reside in Dallas with their two children, Claire and Travis.

The 5th District



The Fifth District takes in Dallas neighborhoods such as Lake Highlands, Lakewood, and White Rock Lake. Much of East Dallas and a significant portion of Garland are located within the Fifth District, as well as all of Mesquite, Seagoville and Sunnyvale.

The Fifth District is home to an expanse of six rural counties that sweep through East Texas. These counties include: Kaufman, Henderson, Anderson, Van Zandt, Wood and Cherokee counties.

The Dallas County portion of the Fifth District is also home to the beautiful White Rock Lake, some of the finest schools in Texas, and thousands of special events like the annual Mesquite Championship Rodeo.

These rural areas and small towns are home to events like the Canton First Monday Trade Days, hundreds of cow-calf operations, thousands of small businesses and some of the richest history that Texas has to offer.

Office Contact Information

Washington D.C.
129 Cannon Building
Washington, D.C. 20515
Phone: 202-225-3484
Fax: 202-226-4888

Dallas
6510 Abrams Rd, #243
Dallas, TX 75231
Phone: 214-349-9996
Fax: 214-349-0738

Athens
810 East Corsicana St., Suite C
Athens, TX 75751
Phone: 903-675-8288
Fax: 903-675-8351

Website: www.house.gov/hensarling

Table of Contents

Navigating Washington, D.C _____	5
Washington Weather _____	6
Here's Where We Can Help _____	6
Public Tours _____	9
Monuments ...	9
Government Buildings ...	11
Capitol Hill ...	12
Historic Sites ...	12
Museums & Galleries ...	14
Parks ...	20
Washington Sports Teams _____	20
Where to Eat in D.C. _____	21
Accommodations _____	22

Navigating Washington, D.C

Overview

Washington, DC is divided into four quadrants - NW, NE, SW, SE. When traveling through the city, note which quadrant your destination is in because the lack of this crucial detail could result in a great deal of confusion. Because streets cross over into multiple quadrants, an address can be duplicated in each.

The Metro and Bus Systems

Washington has an underground transportation system, the Metro, which can transport you to almost all the major attractions, Washington Reagan National Airport, and additional locations for a reasonable fare. Trains arrive in each Metro station frequently during rush hours (5-9:30 a.m. and 3-7 p.m.) and less frequently, approximately every 10 minutes, the rest of the day. The bus system is another inexpensive and dependable form of transportation. For information on Metro schedules, routes, or fares, please refer to their website.

Contact:

(202) 637-7000

http://www.wmata.com/getting_around/visitor_info/

Taxis

Washington, D.C. taxi companies use a meter system (which you will also find in Virginia and Maryland taxis). The rates are the same for all taxis D.C. at \$3.00 for the first 1/6th of a mile and \$0.25 for every 1/6th of a mile thereafter. Finding a taxi is fairly easy at major intersections or hotels, but should you need to arrange for one the companies below can be of assistance. The website below has additional information should you need it.

Contact:

www.detaxi.dc.gov

ABC Cab	(202) 398-0533	Diamond Cab	(202) 387-6200
Liberty Cab	(202) 398-0505	Yellow Cab of DC	(202) 544-1212

Monument Tours

The Old Town Trolley

Hours:

Summer: 9:00 a.m. – 5:30 p.m. (daily)

Prices:

Adult (age 13 and over) – \$35

Child (age 4 to 12) – \$18

Child (age 3 and under) – Free

Contact:

(202) 832-9800

www.oldtownrolley.com

Tourmobile

Hours:

Daily 9:30 a.m. – 4:30 p.m.

Prices:

Adult (age 12 and over) – \$27

Child (age 3 to 11) – \$13

Child (age 2 and under) – Free

Contact:

(202) 554-5100

www.tourmobile.com

Washington Weather

For more information see www.weather.com

Month	Avg. Low	Avg. High	Ave Precipitation
Jan	35°	42°	2.7 in
Feb	29°	45°	2.7 in
March	37°	56°	3.2 in
April	46°	66°	2.7 in
May	56°	76°	3.7 in
June	66°	84°	3.4 in

Month	Avg. Low	Avg. High	Ave Precipitation
July	71°	88°	3.8 in
Aug	70°	86°	3.9 in
Sept	62°	80°	3.3 in
Oct	50°	69°	3.0 in
Nov	41°	58°	3.1 in
Dec	31°	47°	3.1 in

Tours Available Through Congressman Hensarling's Office

The tourist sites of Washington, D.C. are always busy, and tours of the following sites are often hard to secure. Though we might not be successful, we will do everything we can to try to procure a congressional tour of the below sites. Please contact our office as far in advance as possible so we can start working on tour reservations for you.

United States Capitol

Under this splendid white dome, Senators and Representatives collaborate to develop and refine U.S. legislative policy. Personalized, staff-led tours are provided for 5th district constituents by Congressman Hensarling's staff. Please give as much advanced notice as possible to ensure that there is availability.

Staff-led Tour Hours: Mon – Fri; 9 a.m. – 4:30 p.m.

Metro: Capitol South



The White House

The White House, constructed with white-painted Aquia sandstone beginning in 1792, has been the home and principal workplace of every U.S. president except George Washington. A limited number of tours, secured through congressional offices, are available each day. Tour requests must be submitted months in advance.

Hours: Tues – Thurs 7:30 a.m. – 11:00 a.m.

Friday 7:30 a.m. – 12:00 p.m.

Saturday 7:30 a.m. – 1:00 p.m.

Metro: McPherson Square

Contact: (202) 456-7041

www.whitehouse.gov

National Archives and Records Administration

The National Archives houses the 1%-3% of our nation's documents that are kept forever including the United States Constitution, the Declaration of Independence, the Bill of Rights, and extensive genealogical and census files.

Hours: March 15 - Labor Day 10 a.m. – 7 p.m.

Day after Labor Day - March 14 10 a.m. – 5:30 p.m.

Admission: Free

Metro: Archives-Navy Memorial

Contact: 7th Street and Pennsylvania Avenue, NW

Washington, DC 20408

1-866-272-6272

www.Archives.gov

United States Supreme Court

The Supreme Court, established in 1789, is the highest court in the nation with judicial review given to itself in the 1803 Marbury v. Madison case, receiving roughly 8,000 petitions each term to hear individual cases.

Hours: Mon – Fri; 9 a.m. – 4:30 p.m.

Lectures: (when not in session) 9:30 a.m.; 10:30 a.m.; 11:30 a.m.; 12:30 p.m.; 1:30 p.m.; 2:30 p.m.; 3:30 p.m.

Metro: Capitol South

Location: 1st Street & Maryland Ave, NE
Washington, DC 20543
(202) 479-3211
www.SupremeCourt.gov



Library of Congress

This three building complex is the world's largest library containing over 30 million cataloged books, 1 million government publications, 58 million manuscripts, 33,000 bound newspapers, 1 million world newspapers, and much more. It is the research arm of the U.S. Congress.

Hours: Mon – Sat 8:30 a.m. – 4:30 p.m.

Tours: 10:30 a.m., 11:30 a.m., 1:30 p.m., 2:30 p.m., *3:30 p.m. (*Mon – Fri)

Metro: Capitol South

Location: 101 Independence Ave, SE
Washington, DC 20540
(202) 707-9779
www.LOC.gov



Bureau of Engraving and Printing

The largest producer of security documents in the United States, this is where more than 20 billion postage stamps and 9 billion Federal Reserve Notes are produced yearly.

Hours: Monday - Friday (various times throughout the day)

Admission: Ticket required during the summer on a limited, first-come, first-served beginning at 8 a.m.. Advance tickets not available except Sept – Feb. Tours run approx. every 15 minutes throughout the year.

Metro: Smithsonian

Location: 14th Street and C Street, SW
Washington, DC 20228
(202) 874-2330
www.MoneyFactory.com



The Pentagon

The Pentagon is one of the largest office buildings in the world and is home to the U.S. Department of Defense. Constructed during World War II, the building covers 3,705,793 square feet and houses approximately 23,000 employees.

Tours: Mon – Fri 9 a.m. – 3 p.m.

Admission: Group tours (10 to 45 people) available to schools, educational groups, and other various groups by reservation only. Other tours can be arranged through our office.

Metro: Pentagon

Information: <http://pentagon.afis.osd.mil/>

Department of State

If successful in procuring a tour, visitors enjoy viewing the Diplomatic Reception Rooms, which holds an elegant array of 18th Century American art.

Tours: Mon – Fri; 9:30 a.m., 10:30 a.m., 2:45 p.m.

Admission: Reservations required and should be made *90 days* in advance Tour guests are required to arrive at the 23rd street entrance (23rd street NW- between C and D streets) at least 30 minutes prior to their scheduled tour with a photo ID. Children under the age of 12 are not encouraged to participate in this tour.

Metro: Foggy Bottom

Location: 2201 C Street, NW
Washington, DC 20520
www.State.gov

Washington National Cathedral

In addition to the 14th century Gothic Cathedral, visitors can enjoy shops, gardens, and an observation gallery offering spectacular views of the city.

Hours: Sun 8 a.m. – 5 p.m.

Mon – Fri 10 a.m. – 5:30 p.m.
Sat 10 a.m. – 4:30 p.m.

Metro: Dupont Circle

Location: 3101 Wisconsin Ave, NW
Washington, DC 20016
(202) 537-6200
<http://www.nationalcathedral.org/>

Treasury Building

The Treasury Building, originally an executive department of the First Session of Congress in 1789, is home to the Secretary of the Treasury.

Metro: McPherson Square

Tours: Saturdays; 9:00am, 9:45am, 10:30am, 11:15am

Admission: Tours must be scheduled through a congressional office.

Location: 15th Street and Hamilton Place, NW
Washington DC 20502
<http://www.ustreas.gov/education/tour/>

John F. Kennedy Center for the Performing Arts

The Kennedy Center offers a wide variety of performances along with gift shops, restaurants, and private reception spaces. In addition, visitors can explore the Hall of States, the Hall of Nations, and the Center's main theaters.

Guided Tours: (free)

Mon – Fri 10 a.m. – 5 p.m.

Sat – Sun 10 a.m. – 1 p.m.

Admission: Free performances every day at 6 p.m. on the Millennium Stage.

Metro: Foggy Bottom – GWU (Take the free Show Shuttle to and from the Center after 9:45 a.m. on weekdays.)

Location: 2700 F Street, NW
Washington, DC 20566
(202) 416-8340
www.Kennedy-Center.org



**** If you would like the office to help you book any of the above tours please visit the following website to **
fill out a tour request form**

http://www.house.gov/hensarling/serv_tours_form.shtml

Public Tours Without Congressional Reservations

There are very interesting sites around D.C. that, unfortunately, do not provide Congressional tours. These sites are open to the public though, and here is some information that will help you schedule them into your visit.

Monuments

Washington Monument

This monument is among the world's tallest masonry structures, standing at 555 feet. Construction began in 1848 and was completed in 1884. It was dedicated to the memory of the first U.S. President in 1885.

Daily Hours: Memorial Day – Labor Day 9 a.m. – 10 p.m.
Other times 9 a.m. – 5 p.m.

Admission: Free; timed passes required. Advance tickets available
(<http://www.nps.gov/wamo/planyourvisit/feesandreservations.htm> or by calling
1-877-444-6777)

Metro: Smithsonian



Contact: 15th & Constitution Avenue, NW
Washington, DC 20001
(202) 426-6841
www.NPS.gov/wamo

Lincoln Memorial

The Memorial is in the form of a Greek Doric Temple and contains a 19 ft. seated sculpture of Lincoln and two well-known speeches that he made. This monument has been the site of several famous speeches, included Martin Luther Kings “I Have a Dream” speech delivered August 28, 1963.

Hours: 24 hours with park ranger present from 9:30 a.m. – 10:30 p.m.

Metro: Smithsonian

Contact: W. Potomac Park at 23rd Street, NW
Washington, DC
(202) 426-6841
www.NPS.gov/linc



Franklin Delano Roosevelt Memorial

Dedicated on May 2, 1997, this memorial spreads over 7.5 acres and traces 12 years of American History spread throughout 4 rooms, one room for each year Roosevelt was president. It boasts various sculptures depicting President and Mrs. Franklin Delano Roosevelt during events of the Great Depression and World War II. Because of President Roosevelt’s disabilities, the designers intended to create a structure that would be accessible to those with physical impairments.

Daily Hours: 24 hours with park rangers present from 9:30 a.m. – 11:30 a.m.

Metro: Smithsonian (3/4 of a mile walk)

Contact: 1850 West Basin Drive, SW
Washington, DC 20024
(202) 426-6841
www.NPS.gov/fdre

Jefferson Memorial

The 19-foot bronze statue of one of our founding fathers and our third U.S. president stands in the center of a circular colonnade covered by a shallow dome. The marble is inscribed with passages from the Declaration of Independence and other famous Jeffersonian writings.

Daily Hours: 24 hours with park rangers present from 9:30 a.m. – 11:30 p.m.

Metro: Smithsonian (just under a mile walk)

Contact: Tidal Basin, South End of 15th Street, SW
Washington, DC
(202) 426-6841
www.NPS.gov/thje



Arlington National Cemetery

Not originally intended to be a national cemetery when construction began in 1802, Arlington Cemetery is the home of Arlington House, a 19th-century mansion, amid the more than 250,000 military grave sites that stretch out around it. Every hour on the hour during winter months and every half hour during the summer months visitors have the opportunity to see The Changing of the Guard at the Tomb of the Unknown Soldier.

Daily Hours:

April 1 – Sept 30 8 a.m. – 7 p.m.

Oct 1 – March 31 8 a.m. – 5 p.m.

Metro: Arlington Cemetery *Paid parking is available*

Contact: Memorial Dr
Arlington, VA
(703) 607-8000
www.ArlingtonCemetery.org



Vietnam Veterans Memorial and The Woman’s Vietnam Veteran’s Memorial

This controversial memorial currently consists of three parts: the Three Soldier statue, the Vietnam Women's Memorial, and the Memorial wall, which is inscribed with the names of 58,229 people missing or killed in the Vietnam War. Congress created the Vietnam Woman's Memorial Project on November 15, 1988, for the purpose of honoring women of the Armed Forces who served during the Vietnam era.

Daily Hours: 24 hours with park rangers present from 9:30 a.m. – 11:30 p.m.

Metro: Smithsonian

Contact: 21st & Constitution Avenue, NW
Washington, DC 20001
(202) 426-6841
<http://www.nps.gov/vive/>

The United States Navy Memorial

The memorial, honoring those who have served or are currently serving in the Navy, Marine Corp., Coast Guard, and Merchant Marines, was authorized by Congress in 1980 and holds a 100 foot diameter granite map of the world surrounded by sculptural depictions of events in Naval history.

Hours: 9:30 a.m. – 5:30 p.m.

Metro: Archives-Navy Memorial

Contact: 7th Street and Pennsylvania Ave, NW
Washington, DC
(202) 737-2300
www.navy Memorial.org

U.S. Marine Corps War Memorial

This memorial is dedicated to all personnel of the United States Marine Corps who have died in the defense of their country since 1775.

Daily Hours: 24 hours

Metro: Rosslyn

Contact: Marshall Dr. between Route 50 and Arlington National Cemetery
Arlington, VA
(703) 289-2500
<http://www.nps.gov/gwmp/marinecorpswarmemorial.htm>

Korean War Memorial

This memorial was dedicated, to the men and women who fought and died in the Korean War from 1950 to 1953, by President George H.W. Bush on July 27, 1995, the 42nd anniversary of the armistice that ended the war.

Daily Hours: 24 hours with park rangers present from 9:30 a.m. – 11:30 p.m.

Metro: Foggy Bottom

Contact: At the foot of the Lincoln Memorial
Washington, DC
(202) 426-6841
<http://www.nps.gov/kowa/>



Government Buildings

Voice of America

Voice of America is a U.S. government radio network that broadcasts more than 1,000 hours of news and cultural programming in over 44 languages each week around the world.

Tours: Mon – Fri 12 p.m. – 3 p.m. (reservations required)

Metro: Federal Center SW

Contact: 330 Independence Ave, SW
Washington, DC 20237
(202) 203-4990
<http://author.voanews.com/english/about/visitvoa.cfm>

National Aquarium

The nation's first public aquarium is the watering hole for over 1200 specimens of marine life.

Daily Hours: 9 a.m. – 5 p.m.

Admission:

General Admission – \$9

Seniors – \$8

Children (ages 2 to 10) – \$4

Children (2 and under) – Free

Metro: Federal Triangle

Contact: Dept. of Commerce Building, Room B-077
14th Street and Constitution Ave, NW
Washington, DC 20230
(202) 482-2825
www.NationalAquarium.com

Capitol Hill

Senate Office Buildings

The Senate Office Buildings, Russell, Dirksen, and Hart, are located on the north side of the Capitol grounds on Constitution Avenue. These buildings contain the offices of all 100 Senators and the 21 standing committees of the Senate. These buildings are also open to the public.

Metro: Union Station

Contact: Constitution Avenue
Washington, DC 20515
(202) 224-3121
www.Senate.gov

United States Botanic Gardens

This living museum holds permanent collections of tropical, subtropical, and desert plants.

Daily Hours: 10 a.m. – 5 p.m.

Metro: Federal Center SW

Contact: 245 First Street, SW
Washington, DC 20024
(202) 225-8333
www.USBG.gov



Historic Sites

Mount Vernon Estate and Garden

This estate, located on the banks of the Potomac River, was the magnificent plantation home to our first president.

Admission:

Adults – \$15.00

Seniors ages 62+ – \$14.00

Youth ages 6-11 – \$7.00

Children under 6 – Free

Hours:

April – August 8 a.m. – 5 p.m.

March, Sep, Oct 9 a.m. – 5 p.m.

Nov – February 9 a.m. – 4 p.m.

Contact: George Washington Parkway
Mount Vernon, VA 22121
(703) 780-2000
www.MountVernon.org



Union Station

This working train station, visited by approximately 32 million people a year, has been superbly restored and contains over 100 eating and shopping establishments, a nine screen cinema, an international money exchange, and an Amtrak ticket counter.

Store Hours: *Restaurant hours vary*

Mon – Sat 10 a.m. – 9 p.m.

Sun 12 p.m. – 6 p.m.

Metro: Union Station

Contact: 40 Massachusetts Avenue, NE

Washington, DC 20002

(202) 289-1908

www.UnionStationDC.com

Old Post Office Pavilion

This former post office offers shops, restaurants, and a dramatic view of DC from a 315 ft tower.

Store Hours:

Mon – Fri 10 a.m. – 8 p.m.

Sat – Sun 12 p.m. – 7 p.m.

Tower Tours:

Mon – Sat 9 a.m. – 7:45 p.m. (Summer)

Sun 10 a.m. – 5:45 p.m.

Admission: Free

Metro: Federal Triangle

Contact: 1100 Pennsylvania Avenue, NW

Washington, DC 20004

(202) 289-4225

www.OldPostOfficeDC.com



Gunston Hall

Located on a 550 acre National Historic Landmark, The 1750's colonial plantation home of George Mason, father of the Bill of Rights, is famous for both architectural beauty and historical significance.

Daily Hours: 9:30 a.m. – 5:30 p.m.

Admission: (visit website for discounts)

Adults – \$9

Students – \$5

Seniors (60+) - \$8

Young Children – Free

Contact: 10709 Gunston Road

Mason Neck, VA 22079

(703) 550-9220

www.GunstonHall.org

Congressional Cemetery

The nation's first cemetery, which dates back to 1807, is the final resting place for many distinguished Americans, including 19 Senators and 71 Representatives, and contains a large collection of Victorian statuary, 120 of which honor those Representatives who have died while serving in Congress.

Hours: daily from dawn to dusk

Admission: Free; contribution requested. Appointment required for Guided tours.

Metro: Stadium-Armory

Contact: 1801 E Street, SE

Washington, DC 20003

(202) 543-0539

www.CongressionalCemetery.org

Old Stone House

This colonial home, the oldest in D.C., displays 18th century living and a beautiful flower garden.

Tours: Wed – Sun; 12 p.m. – 5 p.m. (summer) *Closed all federal holidays*

Metro: Foggy Bottom (then take bus or cab)
Contact: 3051 M Street, NW
Washington, DC 20007
(202) 426-6851
www.NPS.gov/olst



Georgetown

This European-like, historic neighborhood is home to many restaurants and shops..

Visitor Center Hours:

Mon – Sat 9 a.m. – 5 p.m.

Sun 1 p.m. – 5 p.m.

Metro: Foggy Bottom (then take bus)

Contact: 3242 M St. NW (Visitor Center)
Washington, DC 20007
(202) 342-8190
www.GeorgetownDC.com



Old Town Alexandria

Old Town is known as the hometown of George Washington and Robert E. Lee. Alexandria was founded in 1749 as a seaport by Scottish merchants but is now the home of a large collection of 18th and 19th century attractions.

Visitor Center Daily Hours: 9 a.m. – 5 p.m.

Metro: King Street Metro Station

Contact: 221 King St. (Visitor Center)
Alexandria, VA
(703) 838-4200
www.FunSide.com

Museums and Galleries

Smithsonian Institution Building Visitor Center - “The Castle”

The oldest of the Smithsonian museum buildings contains the crypt of founder James Smithson, as well as theatres, interactive touch-screen programs, electronic wall maps, and much more.

Daily Hours: 8:30 a.m. – 5:30 p.m.

Metro: Smithsonian (mall exit)

Contact: 1000 Jefferson Dr., SW
Washington, DC 20013
(202) 633-1000
www.Si.edu/Visit/InfoCenter

National Air and Space Museum

The Smithsonian Institution's Air and Space Museum preserves the largest collection of historic aircraft and spacecraft in the world.

Daily Hours: 10 a.m. – 5:30 p.m.

Metro: Smithsonian

Contact: 4th St. and Independence Ave, SW
Washington, DC 20560
(202) 633-2214
www.NASM.Si.edu



National Museum of American History

The American History Museum, built in 1964, gives visitors the chance to explore the history of science, technology, and culture in America. Highlights include the Dorothy’s red slippers from The Wizard of Oz, a collection of First Ladies’ inaugural gowns, Fonzie’s leather jacket from Happy Days, and the flag that inspired “The Star-Spangled Banner” – just to name a few.

Hours: 10 a.m. – 5:30 p.m.

Metro: Smithsonian

Contact: 14th St. and Constitution Avenue, NW
Washington, DC 20560
(202) 357-2700
www.AmericanHistory.Si.edu

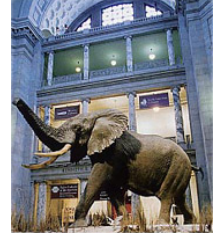
National Museum of Natural History

The Natural History Museum takes a look at the natural world. Visitors have the chance to see dinosaur fossils, the world's largest elephant, the 45.5 carat Hope Diamond, and approximately 120 million additional objects.

Hours: 10 a.m. – 5:30 p.m.

Metro: Smithsonian

Contact: 10th St and Constitution Ave, NW
Washington, DC 20560
(202) 633-1000
www.MNH.Si.edu



National Museum of American Art

This outstanding collection includes works by more than 7,000 artists.

Hours: 11:30 a.m. – 7 p.m.

Metro: Gallery Place

Contact: 8th St. and F St. NW
Washington, DC 20560
(202) 633-7970
www.AmericanArt.Si.edu

Freer Gallery of Art

The Freer Gallery is home to an exceptional collection of Asian art in addition to 19th and 20th-century American works of art.

Hours: 10 a.m. – 5:30 p.m.

Metro: Smithsonian

Contact: 12th St. and Jefferson Dr., SW
Washington, DC 20013
(202) 633-4880
www.Asia.Si.edu

National Portrait Gallery

Hours: 11:30 a.m. – 7:00 p.m.

Metro: Gallery Place

Contact: 8th St. and F St NW
Washington, DC 20560
(202)-633-8300
www.NPG.Si.edu



Arthur M. Sackler Gallery

Among this very distinguished collection of arts and sculptures, visitors will find rotating exhibits of Asian and eastern art is displayed.

Hours: 10 a.m. – 5:30 p.m.

Metro: Smithsonian

Contact: 1050 Independence Avenue, SW
Washington, DC 20013
(202) 633-4880
www.Asia.Si.edu

National Museum of African Art

The National Museum of African Art celebrates the rich visual traditions and amazingly diverse culture of Africa by offering over 80 astonishing works.

Hours: 10 a.m. – 5:30 p.m.

Metro: Smithsonian

Contact: 950 Independence Avenue, SW
Washington, DC 20013
(202) 633-4600

www.NMAFA.Si.edu



Arts and Industries Building -- **currently closed for renovation**

The oldest of the Smithsonian Buildings, the Arts and Industries building was the original home of the American History Museum. This is also the location of President James A. Garfield's inaugural ball.

Contact: www.Si.edu/Ai

Hirshhorn Museum and Sculpture Garden

Comprised of a remarkable cylindrical structure and adjacent garden, this collection includes an array of 19th and 20th century sculptures and paintings.

Museum Hours: 10 a.m. – 5:30 p.m.

Sculpture Garden Hours: 7:30 a.m. – Dusk

Metro: L'Enfant Plaza

Contact: 7th St. and Independence Avenue, SW
Washington, DC 20013
(202) 633-4674

www.Hirshhorn.Si.edu

National Gallery of Art & East Wing

This Smithsonian offers guests to opportunity to view a collection of American and European paintings, sculptures, and arts in addition to changing exhibitions from around the world.

Hours: Mon – Sat 10 a.m. – 5 p.m.

Sun 11 a.m. – 6 p.m.

Metro: Archives – Navy Memorial

Contact: 4th and Constitution Avenue, NW
Washington, DC 20565
(202) 737-4215

www.NGA.gov



Renwick Gallery

This gallery, originally built between 1859 and 1861, is America's first federal art collection. The gallery is named after the well-known New York architect who designed the building.

Hours: 10 a.m. – 5:30 p.m.

Metro: Farragut West

Contact: 17th St. and Pennsylvania Ave, NW
Washington, DC 20013
(202) 633-2850

<http://americanart.si.edu/renwick/>

International Spy Museum

This museum, which focuses on human intelligence and shows the role spies have played in events throughout history, contains the largest collection of espionage artifacts on public display.

Hours: vary from week to week - please call museum for specific hours

Admission: (for all exhibits)

Adults (ages 12 to 65) – \$16

Seniors – \$15

Children (ages 5 to 11) – \$13

Children (age 4 and under) – Free

Metro: Chinatown



Contact: 800 F Street, NW
Washington, DC 20004
(202) 393-7798
www.SpyMuseum.org

US Marine Corps Museum and Historical Center

The Marine Corps Museum offers the public history of the US Marine Corps. The display honors those who have lost their lives serving, the commitment of Marines, and the accomplishments the Marine Corps.

Hours: Sun – Sat 9 a.m. – 5 p.m.

Metro: Eastern Market or Navy Yard

Contact: Washington Navy Yard, 6th St and M St, SE
Washington, DC 20003
1-800-397-7585
www.USMCMuseum.org

US Navy Memorial Museum

This museum was built to honor the rise and progression of the US Navy and shows the Navy's contributions to the national defense of the U.S.

Hours: Mon – Fri 9 a.m. – 5 p.m.

Sat – Sun 10 a.m. – 5 p.m.

Admission: Tour groups and individuals without military I.D. who wish to visit should call in advance

Metro: Archives – Navy Memorial

Contact: Washington Navy Yard, Building # 76
Washington, DC 20374
(202) 433-4882
<http://www.history.navy.mil/Branches/org8-1.htm>

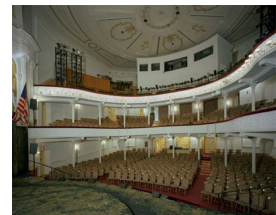
Ford's Theater and Lincoln Museum

This marvelously restored 19th-century theater boasts the Lincoln Museum, which has in excess of 400 historic objects that tell the story of President Lincoln's assassination. Petersen's Boarding House, the actual location of Lincoln's death, is across the street.

Daily Hours: 9 a.m. – 5 p.m.

Metro: Metro Center

Contact: 511 10th Street, NW
Washington, DC 20004
(202) 426-6924
www.NPS.gov/foth



Corcoran Gallery of Art

The Corcoran was Washington's first art museum and is known throughout the world for its eminent collection of modern and historical American art, in addition to European paintings and decorative arts.

Hours: Wed – Mon 10 a.m. – 5 p.m.

Thu 10 a.m. – 9 p.m.

Admission: Individuals – \$10
Students – \$8 (with ID)

Metro: Farragut North or Farragut West

Contact: 500 17th Street, NW
Washington, DC 20006
(202) 639-1700
www.Corcoran.org



United States Holocaust Memorial Museum

This grave and poignant museum displays, through photographs, film, artifacts, and oral histories, the harrowing story of the Holocaust.

Hours: 10 a.m. – 5:30 p.m.

Admission: Free; timed tickets required (available at door or call 1-800-400-9373) to view the permanent collection.

The permanent exhibit is not recommended for children under the age of 11.

Metro: Smithsonian

Contact: 100 Raoul Wallenberg Place, SW
Washington, DC 20024
(202) 488-0400
www.USHMM.org

The Textile Museum

The Textile Museum, built in 1925, is the only museum in the western hemisphere that celebrates the collection, preservation, study and presentation of historic textiles and carpets.

Hours: Tues – Sat 10 a.m. – 5 p.m.
Sun 1 p.m. – 5 p.m.

Admission: Free - donations welcomed

Metro: Dupont Circle

Contact: 2320 S Street, NW
Washington, DC 20008
(202) 667-0441
www.TextileMuseum.org



B’Nai B’Rith National Jewish Museum

The museum is dedicated to preserving and promoting the heritage and contributions of the Jewish people.

Hours: Mon – Thu 12 p.m. – 3 p.m.

Admission: Free; advance reservation required

Metro: Foggy Bottom or Farragut West

Contact: 2020 K St, NW
Washington, DC 20006
(202) 857-6583
www.BnaiBrith.org

National Museum of Women in the Arts

This permanent collection, which contains over 1500 works of art, is the lone exhibition in the world focused wholly on recognizing the contributions of women artists.

Hours: Mon – Sat 10 a.m. – 5 p.m.
Sun 12 p.m. – 5 p.m.

Admission: Adults – \$12
Students – \$10
Children (18 and below) – Free

Metro: Metro Center

Contact: 1250 New York Avenue, NW
Washington, DC 20005
(202) 783-5000
www.NMWA.org/programTours

Woodrow Wilson House

Built in 1915, the museum is D.C.’s only presidential museum and the former home of President and Mrs. Wilson in the last 3 years of his life following his presidency.

Hours: Tue – Sun 10 a.m. – 4 p.m.

Admission: Adults – \$7.50
Seniors – \$6.50
Students – \$3.00

Metro: Dupont Circle

Contact: 2430 S Street, NW
Washington, DC 20008
(202) 387-4062
www.WoodrowWilsonHouse.org

Daughters of the American Revolution Museum

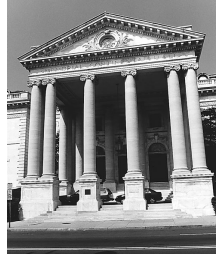
This museum offers the viewing of 33 period rooms, containing rotating exhibits, with an outstanding collection of American furnishings and galleries.

Hours: Mon – Fri 9:30 a.m. – 4 p.m.
Sat 9 a.m. – 5 p.m.

Admission: Free

Metro: Farragut North or Farragut West

Contact: 1776 D Street, NW
Washington, DC 20006
(202) 628-1776
www.DAR.org/Museum



National Geographic Museum at Explorers Hall

The National Geographic Building boasts a unique rotating globe and a special electronic map illustrating many celebrated world expeditions.

Hours: Mon – Sat 9 a.m. – 5 p.m.
Sun 10 a.m. – 5 p.m.

Metro: Farragut North or Farragut West

Contact: 17th Street and M Street, NW
Washington, DC
(202) 857-7588
<http://www.events.nationalgeographic.com/events/locations/center/museum/>

Newseum

This massive 250,000-square-foot museum is the only interactive museum of news. It provides five centuries of news history and up-to-the-second news through excellent technology and hands-on exhibits

Hours: Sun – Sat 9 a.m. – 5 p.m.

Admission: Adults - \$20
Seniors - \$18
Students - \$13

Contact: 555 Pennsylvania Ave.,
Washington, D.C. 20001
1-888-NEWSEUM
www.Newseum.org

Folger Shakespeare Library

The Folger Shakespeare Library is a spectacular research center devoted Shakespeare and the early modern age in the West.

Hours: Mon – Sat 10 a.m. – 5 p.m. *Closed all federal holidays*

Admission: Free

Metro: Capitol South

Contact: 201 East Capitol Street, SE
Washington DC 20003
(202) 544-4600
www.Folger.edu

Phillips Collection

Opened in 1921, the Phillips collection, a private collection of renowned artists, became the first museum of modern art in the United States.

Hours: Tue – Sat 10 a.m. – 5 p.m.
Sun 11 p.m. – 6 p.m.

Admission: prices vary with each exhibition.

Metro: Dupont Circle



Contact: 1600 21st Street, NW
Washington, DC 20009
(202) 387-2151
www.PhillipsCollection.org

Parks

Theodore Roosevelt Island

This island memorial, befitting the outdoorsman 26th President holds two and a half miles of nature trails in additions to the Roosevelt Memorial Statue.

Hours: daylight hours only

Contact: In the Potomac River
George Washington Memorial Pkwy
Washington, DC
(202) 285-2620
www.NPS.gov/this

National Arboretum

In addition to a famous Bonsai collection, the Arboretum contains 444 acres of trees, flowering plants, shrubs, and picnic grounds

Hours: 8 a.m. – 5 p.m.

Admission: Free, and. Guided tours offered (with three weeks advance notice) for groups of 10 or more

Metro: Stadium – Armory *free parking is available*

Contact: 3501 New York Ave., NE
Washington, DC 20002
(202) 245-2726
www.USNA.USDA.gov



National Zoological Park

The National Zoological Park contains over 3,000 exotic birds, animals, and reptiles from around of the world, including 4200 pound Asian elephants to millipedes.

Hours: April 3 – Oct 29 6 a.m. – 8 p.m. (grounds)
10 a.m. – 6 p.m. (buildings)

Oct 30 – April 1 6 a.m. – 6 p.m. (grounds)
10 a.m. – 4:30 p.m. (buildings)

Admission: Free; Guided and group tours available by appointment

Metro: Woodley Park – Zoo – Adams Morgan

Contact: 3001 Connecticut Avenue, NE
Washington, DC 20008
(202) 633-4800
www.NationalZoo.Si.edu

Local Sports Teams

Basketball - Washington Wizards

Season: October - May

Metro: Gallery Place – Chinatown

Contact: Verizon Center
601 F Street, NW
Washington, DC 20004
(202) 661-5050
www.WashingtonWizards.com

Football - Washington Redskins

Season: August - January

Metro: Landover or Addison Rd

Contact: FedEx Field
1600 FedEx Way
Landover, MD 20785
(301)276-6738
www.Redskins.com

Baseball - Washington NationalsSeason: March – OctoberMetro: Navy YardContact: Nationals Park
S. Capitol and N St. SE
Washington, D.C. 20003
(202) 675-6287
www.Nationals.com**Soccer - DC United**Season: March - OctoberMetro: Stadium – ArmoryContact: RFK Stadium
2400 E. Capitol Street SE
Washington, D.C. 20003
(202) 587-5000
www.DCUnited.com*Where to eat on Capitol Hill*

- Union Station** - 500 Massachusetts Ave, NW
American (American); Center Café (American); Savannah (Southern); Station Grill (American);
Uno's Pizzeria (Pizza)
- Pete's Carryout (American)** - 1950 I St., NW
- Capitol Supermarket** - 1231 11th St., NW
- Tortilla Coast (Mexican)** - 400 1st St, SE
- Bullfeathers (American)** - 410 1st St., SE
- Good Stuff Eatery (American)** - 303 Pennsylvania, SE
- Le Bon Café (Casual/French)** - Carryout Only, 2nd Street SE
- The Monocle (American)** - 107 D St., NE
- Yamato (Japanese)** - 201 Massachusetts, NE
- White Tiger (Indian)** - 301 Massachusetts, NE
- Armand's Chicago Pizzeria (Pizza)** - 226 Massachusetts, NE
- Subway (Sandwiches)** - 236 Massachusetts, NE; 406 1st St, SE
- Café Berlin (German)** - 322 Massachusetts, NE
- Capitol City Brewing Co.** - 2 Massachusetts, NE
- Jimmy T's Place (American)** - 501 E. Capitol St. , SE
- Eastern Market Lunch (American)** - 225 7th St., SE
- Presto Deli & Carryout (Italian)** - 210 6th St. SE
- China Wall (Carryout)** - 415 8th St., SE; 424 8th St., SE
- Trattoria Alberto (Italian)** - 506 8th St., SE
- Szechuan House (Chinese)** - 515 8th St., SE
- Burrito Brother (Mexican Carryout)** - 205 Pennsylvania, SE
- 2nd St. Deli (Natural)** - 209 Pennsylvania, SE
- Chesapeake Bagel Bakery (American)** - 215 Pennsylvania, SE
- Hunan Dynasty (Chinese)** - 215 Pennsylvania, SE
- Greek Taverna (Greek)** - 305 Pennsylvania, SE
- La Lomita Dos Restaurant (Mexican)** - 308 Pennsylvania, SE
- Thai Roma (Thai)** - 313 Pennsylvania, SE
- Hawk 'n Dove (American)** - 329 Pennsylvania, SE
- Tune Inn (American)** - 331 ½ Pennsylvania, SE
- Bread & Chocolate (New American)** - 666 Pennsylvania, SE
- McDonald's (Fast-Food)** - 1539 Pennsylvania, SE

Hotels

Best Western- Capitol Hill

724 3rd ST, NW
Washington, DC 20001
1-800-242-4831
(202) 842-4466
(202) 842-4831 (fax)
<http://www.bestwestern.com/>

Red Roof Inn- Downtown DC

500 H Street, NW
Washington, DC 20001
1-800-843-7663
(202) 289-5959
(202) 682-9152 (fax)
http://www.redroof.com/reservations/inn_details.asp?innNumber=254

Washington Court Hotel

525 New Jersey Avenue, NW
Washington, DC 20001
(202) 628-2100
(202) 879-7918 (fax)
<http://www.washingtoncourthotel.com/>

Capitol Hill Suites

200 C. St., SE
Washington, DC 20003
1-888-627-7811
(202) 543-6000
(202) 547-2608 (fax)
<http://www.capitolhillsuites.com/index.html>

Holiday Inn- Capitol Hill

415 New Jersey Avenue, NW
Washington, DC 20001
(202) 638-1616
(202) 638-0707 (fax)
<http://www.hionthehilldc.com/>
550 C Street, SW
Washington, DC 20024
(202) 479-4000
<http://www.hicapitoldc.com/>

Hyatt Regency Washington

400 New Jersey Avenue, NW
Washington, DC 2001
1-800-233-1234
(202) 737-1234
(202) 737-5773 (fax)
<http://washingtonregency.hyatt.com/hyatt/hotels/index.jsp>

For more hotel information....

Capitol Reservations:
1-800-847-4832

Hotel Reservation Network:
1-800-964-6835
www.Discount.com

Washington, DC Accommodations:
1-800-554-2220